



CINDERELLA

Social Story

Relaxed Performance

Monday 6 January, 10.30am

The spectacular family pantomime!

Directed by **Estelle van Warmelo**

Written by **Lyndsay Maples**

Co-sponsored by

Media Partner



Supporting



BOX OFFICE 01432 340555

courtyard.org.uk

In Partnership with



Supported using public funding by
**ARTS COUNCIL
ENGLAND**

I'm going to see Cinderella!

Cinderella is a pantomime.
A pantomime is a show filled with talking, dancing,
singing and lots of laughter.

It is very lively and the audience get to join in by clapping, shouting, booing and singing along. The people on the stage are called actors. The actors will tell the story by talking, singing and dancing.



The show is being performed at The Courtyard.

The Courtyard is a big building with lots of glass that has a theatre, cinema and café inside.

This is what it looks like from outside.



If I arrive by car, bus or bike then I will go to the car park and see the building from behind which looks like this.



When I arrive at the The Courtyard there may be lots of people around who want to see the show.

I may have to queue or wait to go in.



Inside the theatre, the people at Box Office will help me to pick up my tickets, if I haven't already got them.



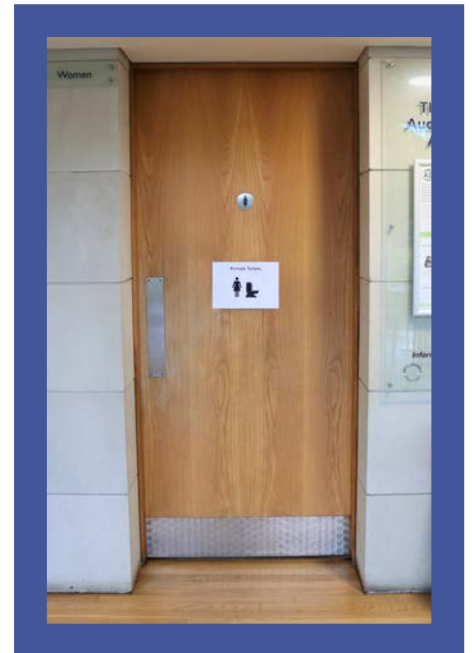
I may spend time in the Café Bar to get a drink or a snack.



The main room where the pantomime happens is called the Main House.

Before we go inside the Main House, we will pass the doors to the toilets.

If I need to use the toilet, I can ask the person I'm with.



There will be lots of people working at The Courtyard who will be able to help me if I need it.

They will be wearing sparkly hats.



I can get inside the theatre from different levels. Which level I go to depends on which door leads to my seat.

There will be a number on my ticket telling me which door to go to.



I may go in at the ground floor or I might have to climb the stairs.

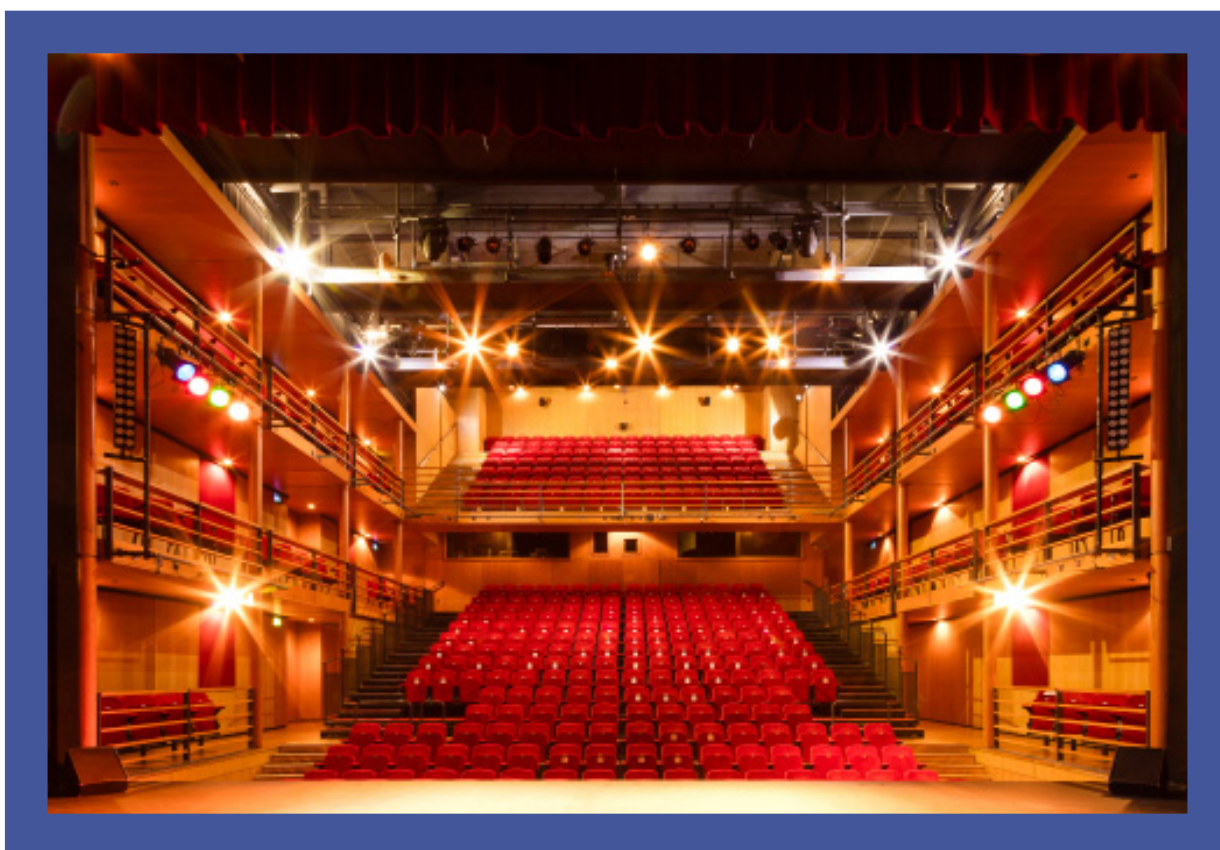
If using the stairs is difficult for me, there is a lift that I can use to get to different levels.



A person called a Steward will look at our tickets.
They will be wearing a blue uniform.

There will be a letter and number on our ticket that will
tell us what seats to sit in. The Steward can show us where
our seats are.

We will then go inside the Main House.
It is very big and there are lots of red seats!



When we go inside the Main House and find our seats, there will be lots of other people sitting down around me and it may be very busy.

We will be sitting facing the stage.



When it is time for the show to start,
some of the characters will come on stage
and introduce themselves.

The Main House will then get darker
and everyone will go quieter.

If I listen to the actors on the stage I will be able
to hear more of the story.

When the show starts I will hear music and singing. If it is too loud then I can cover my ears with my hands. If I have ear defenders I can wear these.



There will also be some bright lights. If it is too bright I can cover my eyes. I can also ask to move to a different seat where the lights might be less bright.



Sometimes a tall man standing next to the stage will hold up boards that will warn me about loud noises coming up or if it might get a bit darker.

This will help me prepare for what happens on stage.



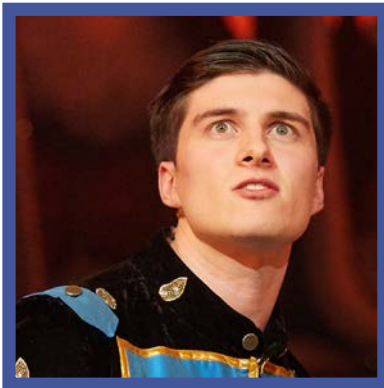
I can leave the Main House if I want to at any point.

There will be quieter room called the 'Chill Out Room' where I can go to relax and play. There will be signs to help me find this room.

There might be other people in this room.



I will see the actors on the stage. They will be dressed in strange and brightly coloured clothes. They will sing and dance around the stage and speak loudly. These are the different characters I will see.



Prince



Cinderella



Buttons



Fousty



Fidge



Fairy Godmother



Wicked Stepmother

People will probably laugh lots at the Ugly Sisters called Fousty and Fidge as they are very funny. Fousty and Fidge are men dressed up as women and wear lots of make up and big costumes.



Two actors called James and Ellis play Fousty and Fidge. This is what they look like when they aren't dressed up.



The Wicked Stepmother is a baddie and is sometimes mean to people.

If I like I can shout “**Boo!**” when she comes on stage.



An actor called Mel plays the Wicked Stepmother. This is what Mel looks like when she isn't dressed up.



**Half-way through the show there will be a break.
This is called the interval.**

During the break all the lights will get brighter and people will leave the auditorium to get a drink, have an ice cream or to go to the toilet. The interval lasts 20 minutes and someone who works at The Courtyard may talk to me to ask me if I like the show so far and what I think about it but I don't have to talk to them if I don't want to.

There will be announcements over the loudspeaker to tell me how long there is left in the interval and when to go back into the auditorium.

When the interval has finished, everyone will come back to their seats and sit down again. It will get darker and quieter again, just like at the beginning of the show.

The actors will come back on the stage and finish playing out the story.

In the second half the Wicked Stepmother gets very cross with Cinderella and Buttons.

Buttons gets put in a box and sent away. It might make me feel sad or scared.



Buttons doesn't have to stay in the box for very long.

The Fairy Godmother brings him back
and everything is okay.



At the end of the show Fousty and Fidge will teach us a song. I can join in if I like but I don't have to if I don't want to.



When the story has finished, all of the actors will come out on stage and bow to us in the audience. This is called a curtain call.



The audience will clap a lot so the actors know how much everyone liked the show. Some people will also cheer and make noise to show that they had a really good time. I can join in if I would like to.

If this is too noisy then I can cover my ears or ask the person I'm with to take me out of the auditorium.

Once this clapping has stopped it is time to go home.

ADDITIONAL NOTES FOR PARENTS AND CARERS

CAFÉ BAR, DRINKS & ICE CREAMS

- The Café Bar will be open from 9am and serves a wide range of drinks, meals and snacks. Lunch is available from 12noon to 2.30pm. If you would like to have a meal with us, we advise that you book a table in advance by calling 01432 346525.
- Ice Creams, bottled drinks and sweets are available from the Café Bar and also from the Stewards on each floor. The shop will be open from 9.45am before the show and during the interval. You can pre book Ice Creams on our website or through Box Office.

ARRIVAL/INTERVAL/DEPARTURE

- The Courtyard will be open from 9am and customers are welcome to arrive at any time. The Chill Out Room will also be available from this time and can be used by anyone attending the Relaxed Performance. We strongly suggest that you aim to arrive in good time to allow your party to familiarise themselves with the building and use the facilities. Please ensure everyone takes their seats in plenty of time and has the opportunity to get used to the auditorium surroundings before the performance starts at 10.30am. The auditorium will open for the Relaxed Performance at 9.30am.
- There will be one 20 minute interval. This will be at approximately 11.45am. The show will end at approximately 12.50pm.
- Please be patient at the end of the show as the lift will be in high demand.
- You are welcome to stay after the show and make use of the facilities. Please note that there is another performance of the pantomime at 3pm and a film in our Studio space at 2.30pm so the Foyer may be busy.

BREAKOUT ROOMS/FACILITIES

- Carers must accompany anybody who is using the Chill Out Room at all times.
- The Chill Out Room will be located at the end of the Foyer on the Ground Floor, adjacent to the Door 2 entrance to the Main House. It will have a relaxed feel, sensory lighting, beanbags, sofas and quiet toys.
- There are accessible toilet facilities on the Ground Floor between the foyer and the Café Bar, and on the First Floor next to the stairs.
- Staff will be available (in sparkly hats) to answer any questions, offer assistance or directions on the day.
- Souvenir programmes will be available to purchase from the Box Office, Café Bar and Merchandise point.
- A lift is available to all floors.

EVACUATION

- Should an evacuation be necessary, please follow the instruction of Stewards or other members of Staff (look for sparkly hats). If an evacuation is necessary during the show, an announcement will normally be made from the stage and then Stewards and Staff will guide you. We will try to use exit routes that the audience will already be familiar with but, please note that this may not be possible depending on the nature of the emergency. You may also hear sirens, especially away from the auditorium.
- The assembly point is on the far side of the Car Park.
- In case of fire, the lift cannot be used. We do have special evacuation chairs to be used by trained Staff to get those who cannot manage the stairs safely to Ground Floor level.

FILMING/PHOTOGRAPHY

- Please note there may be official photography and/or filming taking place in the Main House and in the Foyers. Please ensure that you tell the photographers or cameramen if you do not wish any of your party to be photographed or filmed.